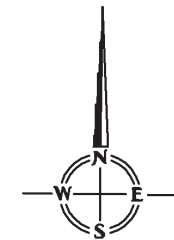


21475 Summit Road
PLAT MAP

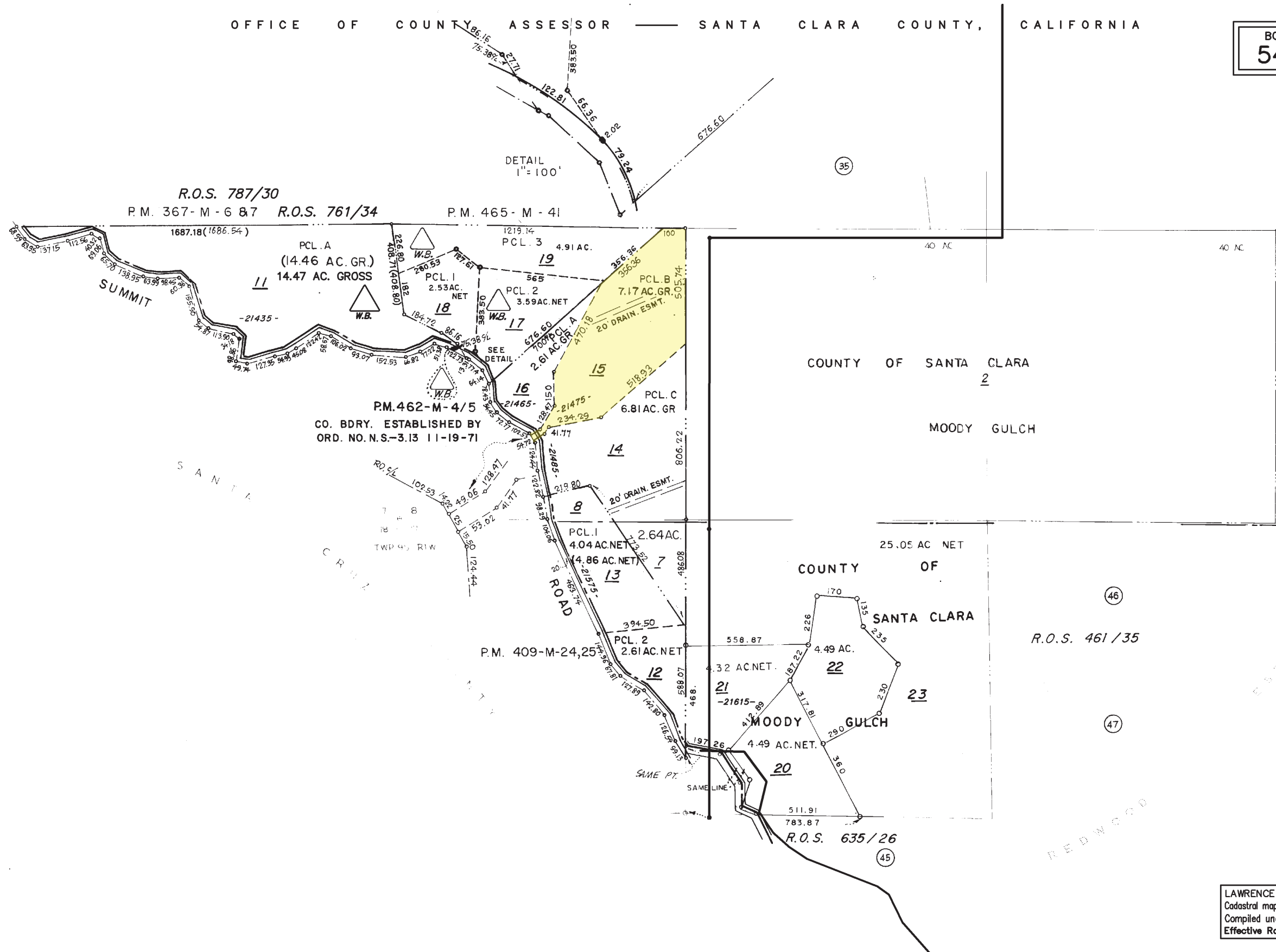
OFFICE OF COUNTY ASSESSOR — SANTA CLARA COUNTY, CALIFORNIA

BOOK 544	PAGE 49
--------------------	-------------------



1" = 400'
37

38



LAWRENCE E. STONE — ASSESSOR
Cadastral map for assessment purposes only.
Compiled under R. & T. Code, Sec. 327.
Effective Roll Year 2008—2009